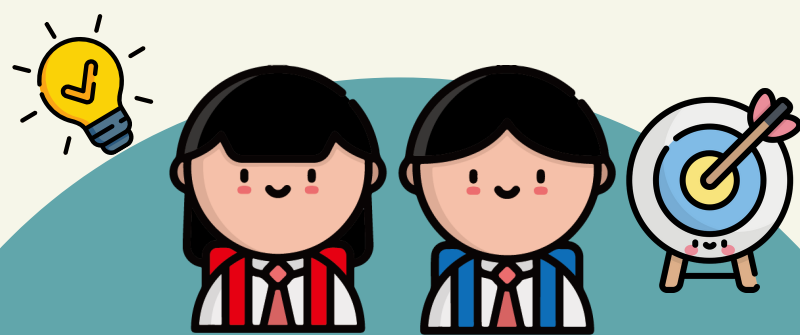


OUTDOOR EDUCATION CAMP ACTIVITIES (PRIMARY SCHOOL)

1 ACTIVITIES PACKAGE 1



Multiple themed education camp activities allow students to have "Whole-Person Learning". Through challenging and adventurous group life and activities, students could be inspired to love life, respect others and desire to learn, to achieve different academic goals and help students grow.

✨
\$560/PERSON 

DAY 1

1500 - 1515	Check-in & Introduction
1515 - 1600	Settle Down
1600 - 1800	Team Games (Ice Breaking)
1800 - 1900	Dinner
1900 - 2100	Camp Site Orienteering
2100 - 2130	Sharing Time
2130 - 2300	Freshen Up
2300	Bedtime

DAY 2

0800 - 0900	Breakfast
0900 - 1200	School Course
1200 - 1300	Lunch
1300 - 1430	G4 Mission
1430 - 1600	G4 Mission
1600 - 1800	Recess
1800 - 1930	Preparation of picnic
1930 - 2100	Picnic time
2100 - 2300	Freshen Up
2300	Bedtime

DAY 3

0800 - 0900	Breakfast
0900 - 1100	School Course
1100 - 1200	Room cleaning
1200 - 1300	Lunch
1300	Leaving

2 ACTIVITIES PACKAGE 2

✨
\$645/PERSON 

DAY 1

1500 - 1515	Check-in & Introduction
1515 - 1600	Settle Down
1600 - 1800	Team Games (Ice Breaking)
1800 - 1900	Dinner
1900 - 2100	Camp Site Orienteering
2100 - 2130	Sharing Time
2130 - 2300	Freshen Up
2300	Bedtime

DAY 2

0800 - 0900	Breakfast
0900 - 1100	"Super" challenge
1100 - 1200	School Course
1200 - 1300	Lunch
1300 - 1430	G4 Mission
1430 - 1600	G4 Mission
1600 - 1800	Recess
1800 - 1930	Preparation of picnic
1930 - 2100	Picnic time
2100 - 2300	Freshen Up
2300	Bedtime

DAY 3

0800 - 0900	Breakfast
0900 - 1100	Roman Catapult
1100 - 1200	Room cleaning
1200 - 1300	Lunch
1300	Leaving



Application Procedure:

1. Before deciding to use this camp, please refer to the outdoor education camp leaflet listed above. All education camps in primary and secondary schools will follow this procedure. If you need to have any modifications, please consult with the staff.
 2. Call 2627 2000 to reserve any bookings.
 3. Within 7 days from the day when the camp is reserved, Download and fill in the appropriate outdoor education camp application form, and email (campservice@ayp.org.hk) to confirm the period of bookings and the number of participants. Deposit will be charged.
 4. Pay the booking fees through bank deposit (check/cash), please fill in the school name and camp period on the deposit slip and email back to the campsite and call for confirmation
 5. The staff will contact the school and send out a schedule about the education camp activities for further information.
 6. Please pay attention to various safety measures and refer to the "Outdoor Activities Guidelines" issued by the Education Bureau.
- For any inquiries, please contact Mr. Leung, Tel: 2627 2030.

The outdoor education camp (2021-2022) will be available for reservations from May 17 to 9 a.m. in 2021.
The minimum number of applicants is 40, so stay tuned!

